



EV ZERO MISSION EMISSION



ACCELERATE INTO THE FUTURE –
THE ECO-FRIENDLY WAY TO RIDE

FUTURE IS ELECTRIC VEHICLES



Group of Companies



Gilli Chai



MESMA & Training
Education
ACADEMY

EV POINT



MESMA EV Choice



OVERVIEW

MESMA Solutions Private Limited Company is a 100% Indian electric two & three wheeler manufacturing company that was established in 2018 with a mission to create two & three wheelers that can drive our present towards a sustainable future.

WE BELIEVE IN MOVING FORWARD WITHOUT LEAVING MOTHER NATURE BEHIND

We're here to nurture a lifestyle that isn't just rich from the outside, but has deeper values rooted within it, a lifestyle that believes in giving back to the nature



MESMA



About the Company

MESMA is a marketing entity that is established with a thought process to enhance the empowerment of business leaders who are focused to achieve in the promotion of Multi brand electric vehicles.

MESMA is focused to build its centralized affiliates who shall contribute to the EV eco-system and be a growth hackers with a win-win proposition.





OUR VISION



"EV for all - All for EV"

Be a trusted EV Brand with Global Presence.

OUR MISSION



**Make India achieve
ZERO EMISSION
in last mile delivery by 2025
and Mobility by 2030**

Establish MESMA to be Number One Electric Two & three Wheeler Company by delivering smart, innovative, stylish, comfortable and energy-efficient vehicles and to be the benchmark of affordable eco-friendly technology for the generation to come.

CORE VALUES



CUSTOMER CENTRIC

All our deliverables are towards customer satisfaction.



OWNERSHIP & ACCOUNTABILITY

We are accountable for all our actions and take ownership of the result.



TRUST & MUTUAL RESPECT

We believe in open communication and give due regard to feelings and opinion of others.



INTEGRITY

Being ethical, fair and transparent in what we do



TEAMWORK

We believe success is through teamwork.





MANAGING DIRECTOR'S MESSAGE

We are at a stage where a huge step is necessary for the conservation of the environment.

During my visits abroad, I saw a visible awareness in consumer conscience related to the need of adopting electric vehicles as the primary source of personal mobility. From then onwards, I got the inspiration to manufacture a product that is eco-friendly and require minimum resource and make India's presence felt on the global map We at MESMA, believes that the POWER TO CHANGE the world lies within us. India is in dire need of clean fuel mobility revolution and we would like to be the torch bearer of that. Hence our focus remains to provide an affordable but world class electric vehicles with innovative technology to Indian customers, We would like to propose an alternative to IC engine products in the form of High Speed electric vehicles. We adhere to "Make in India" initiative of our Hon PM Shri. Narendra Modi and manufacture a product which is for Indian, by the Indians. We consider each and every customer of ours as a brand ambassador of MESMA. Thus, the responsibility on our shoulder increases and we will handle that responsibility with utmost respect and gratitude. We will keep investing in new technologies, designs, features and will remain ahead of the curve in this booming industry of EV's

S/d
Mr C Selvakumar





**Accelerate into the future –
The eco-friendly way to ride**

MESMA

What We Do

Right from the day of inception of Mesma, We are working to make last mile delivery and Mobility achieve ZERO EMISSION

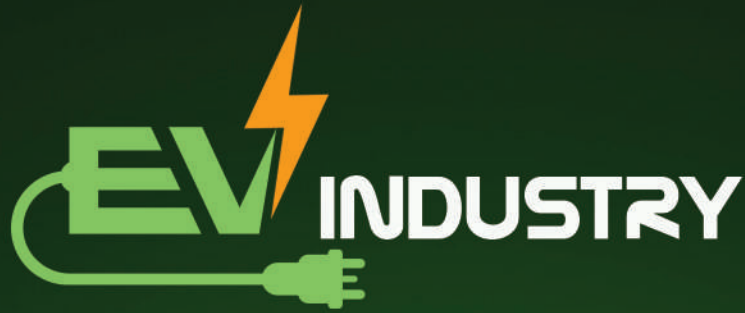
Mesma EV Choice

Mesma EV Point

Mesma EV Academy

Gilli Chai





How to Invest in EV Technology

First, look for the companies supporting electric vehicles. The ones that are committed to making the switch to EVs. These could be manufacturers who are planning to produce EVs or suppliers who provide parts and components.

Why to join MESMA?

MESMA management has its strong forte in the Automobile industry for the past 15+ years. It has the good track record on the promotional performance contributed to the EV industry with the major players in the industry.

MESMA maintains a healthy culture and transparency in its business operations and provides a win-win situation to all its associates.

“
**ADVANTAGE
TO JOIN MESMA**
”

ELECTRIC VEHICLE DIVISION

MESMA has ventured in the ELECTRIC VEHICLE BUSINESS since 2017. We are one of the most reliable and well equipped manufacturers of Electric Vehicles with best services at nominal prices. MESMA ELECTRIC VEHICLE DIVISON includes E-Rickshaw, E-scooter & E-Loader. All vehicles have been manufactured with high-quality spare parts with arrangement for excellent customer service

“
RIGHT TIME TO START BUSINESS WITH MESMA
”

We wish you out to grow in life and business

The Electric scooter industry is affordable, sustainable, and growing.
A new way of life is emerging and you can make the most of it.



Dealership

with



MESMA

We have great expectations from our Dealers. We consider them as our family member, not only we consider them , we treat them also in such manner. Similarly we expect Mesma to be treated by them in such manner as Mesma treats them. We have following expectations from our beloved dealers

Straightforward and reasonable managing.

- Strong adherence to commitment made to Retail client and to Mesma
- Meeting the objective set out by Mesma
- Sales promotion activity.
- Attractive and structured showroom.
- Respect to Mesma and its representatives.
- Ethical and legitimate business movement.
- Have adequate staff to deal with clients need.
- Acceptance of terms and conditions set out by Nesma time to time.





“ RANGE ”

MESMA offers a wide range of electric bikes that are reasonable for all individuals. It is a helpful and quick method for transport for the younger buyer helping them reach schools and universities. For working experts and office goers, it helps in sparing fuel costs making it very affordable. MESMA Electric Scooters also work very well for the elderly buyers offering them a safe ride.

“ RESPECT ”

By joining hands with Mesma, you will have a chance to be related to our brand and join the channel network of more retail outlets. Work with Mesma and appreciate benefits that accompany your electric scooter dealership.

“ RECOGNITION ”

Become the source to a superior world with electric mobility. Let us build green India together. Battery controlled electric vehicles help in diminishing carbon emissions that adds to pollution, and thus help in cleaning the earth. Alongside making travel less expensive and helpful for individuals; be perceived for your mindful commitment towards a greener earth

“ REMUNERATION ”

Let us grow together. We each can't prevail without the other. This is your opportunity to benefit from a developing business sector, the predominant item and administration edges. Join Mesma and find the potential of this market.

Introducing an electric scooter that combines style, performance, features, and unbeatable value. With its sleek design and powerful electric motor, the Classic delivers an exhilarating ride. Packed with advanced technology and customizable ride modes, this e-Scooter offers an unmatched riding experience. Best of all, it comes at an unbeatable price. Get ready for an electrifying journey with the extraordinary Classic.





Our Services

Turn-key solution for EV Charging Infra Network.

Range of charging equipment that meet the global standards being followed by various vehicle manufacturers. Customized installation support to ensure round-the-clock operations of customer asset.

Service and maintenance support to ensure round the clock operations.

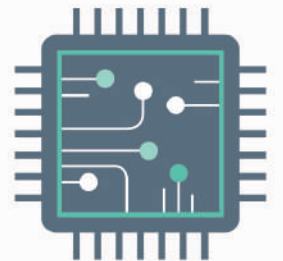
Mobile application for customer to monitor charging , Vehicle to vehicle charging and seamless charging station management.

OUR EV CHOICE...





Now Boost Your Range With Assured Mileage



SRT Smart Range Technology



Innovation in Mobility



SPECIFICATION

Model	Rapid
Top Speed	80 Km
Mileage	100/200/300 Km*
Battery Capacity	60 V- 30/52/72 AH
Motor Capacity	2000 WAT
Break	Front DISC Back Drum
RTO	Yes
Tyre Size	12 Inch

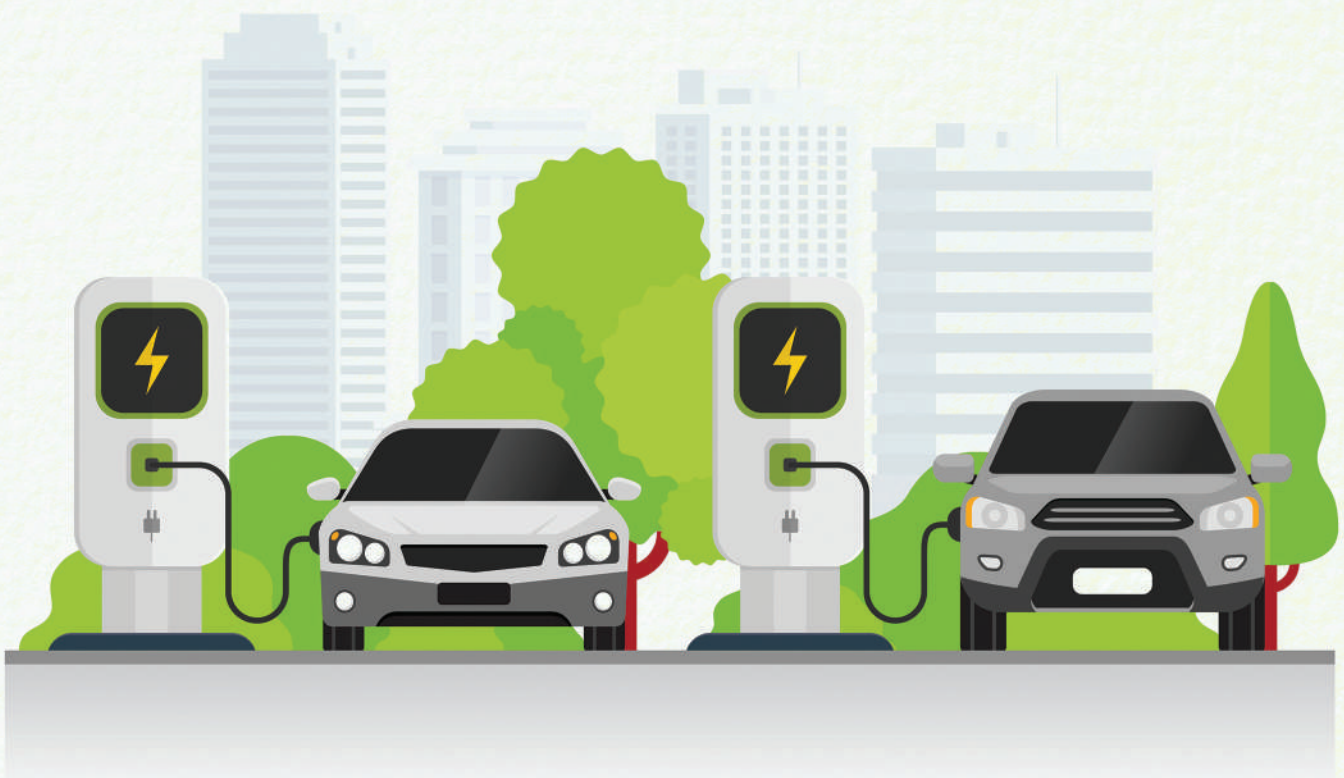
300 KM Per Charge



MESMA EV POINT

Mission Zero Emission

Company is into Charging Station business the opportunity
is open to All Dealers



CCS-2/CHADEMO CHARGING STATION

Single Gun: 15 KW

Single & Dual Gun: 30 KW & 60 KW

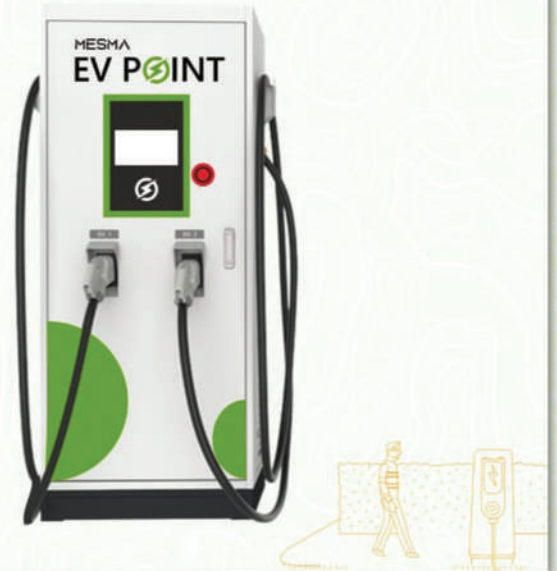
Dual Gun: 120 KW

Supports Output range from
15 KW to 120 KW

Charging Guns:
CCS-2/ CHAdeMO

1-2 outputs for
charging

3 Phase



DC001 CHARGING STATION

15 - 22 KW

Supports BEVC-DC001
Specifications

Charging gun as per
GB/T 20234.3
compliance

1-2 outputs for
charging

3 Phase





AC 3.3 KW



AC 7 KW



AC 22 KW



DC 60 KW



DC 120 KW



DC COMBO 142 KW



COMBO CHARGING STATION

Available in 142 kW combo charger
(60 kW CCS, 60kW CHAdeMO plus 22kW Type 2 AC)

Output range : 142kW

Charging guns :
CCS & CHAdeMO &
AC Type 2 Connector

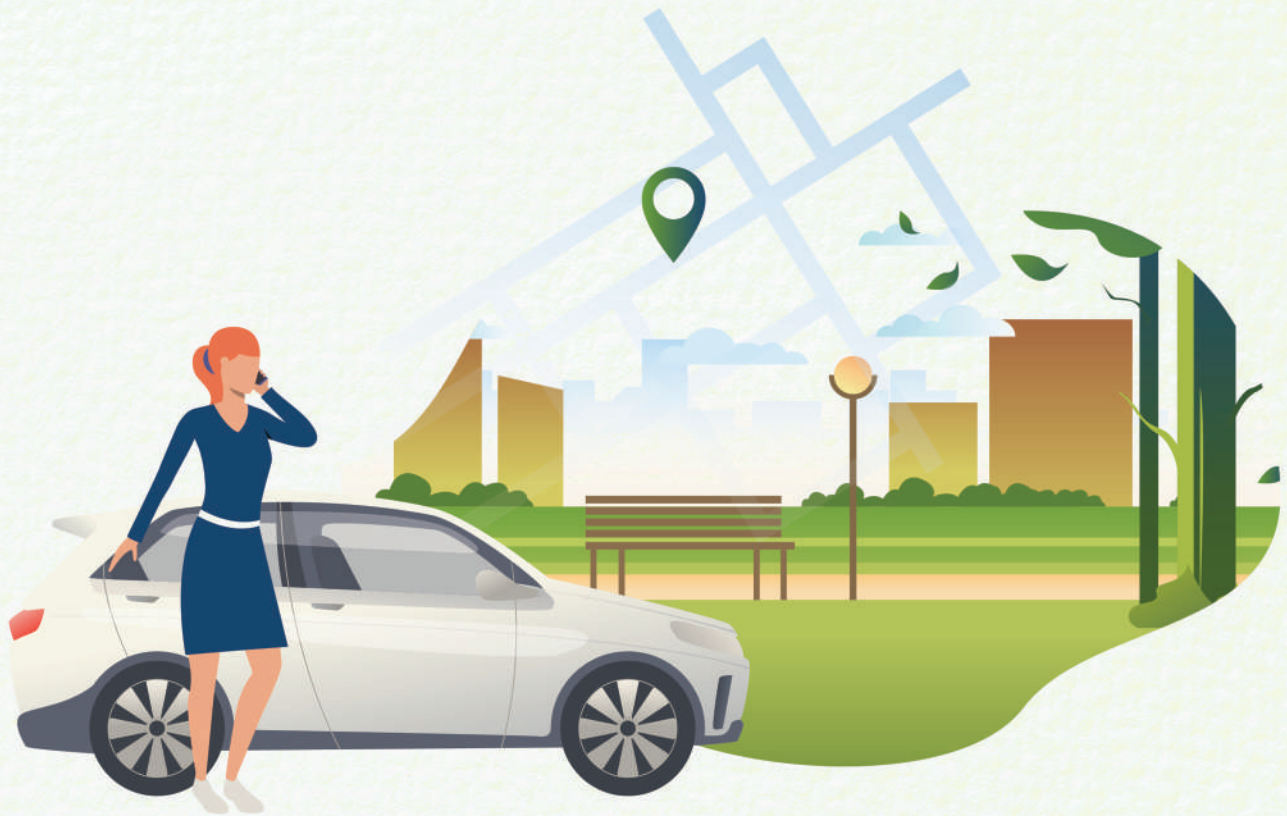
Smart Charging Solution-
Takes care of Grid load &
varying charging demand

3 outputs for
charging

3 Phase

Smart Card, QR/App
serve based online
payment





LEARN THE LATEST SKILLS

Build skills with flexible Mesma courses



TRUSTED ACADEMY

We promote skill-based training and follow an industry-relevant curriculum. The courses should have a balanced mix of theoretical and practical skills.

WELL-STRUCTURED COURSES

The syllabus needs to be comprehensive enough to cover all industrial requirements while providing you with additional practical skills that help you crack job interviews and refine your corporate communication skills as well.

WHY CHOOSE US?

Skill-based training is an important part of a career journey. And, the institute & trainers play a pivotal role in shaping your professional outlook. There are certain points that will help you to choose EV Academy as the best knowledge and education partner.

EXPERT FACULTY:

We recommend faculty members with core industry experience for career training

KEY FEATURES

Learn basic to advanced Electric Vehicle, 10+ Advanced Softwares in designing/ Simulation & Analysis, Execute industry projects & become a master of Electric Vehicle Technology

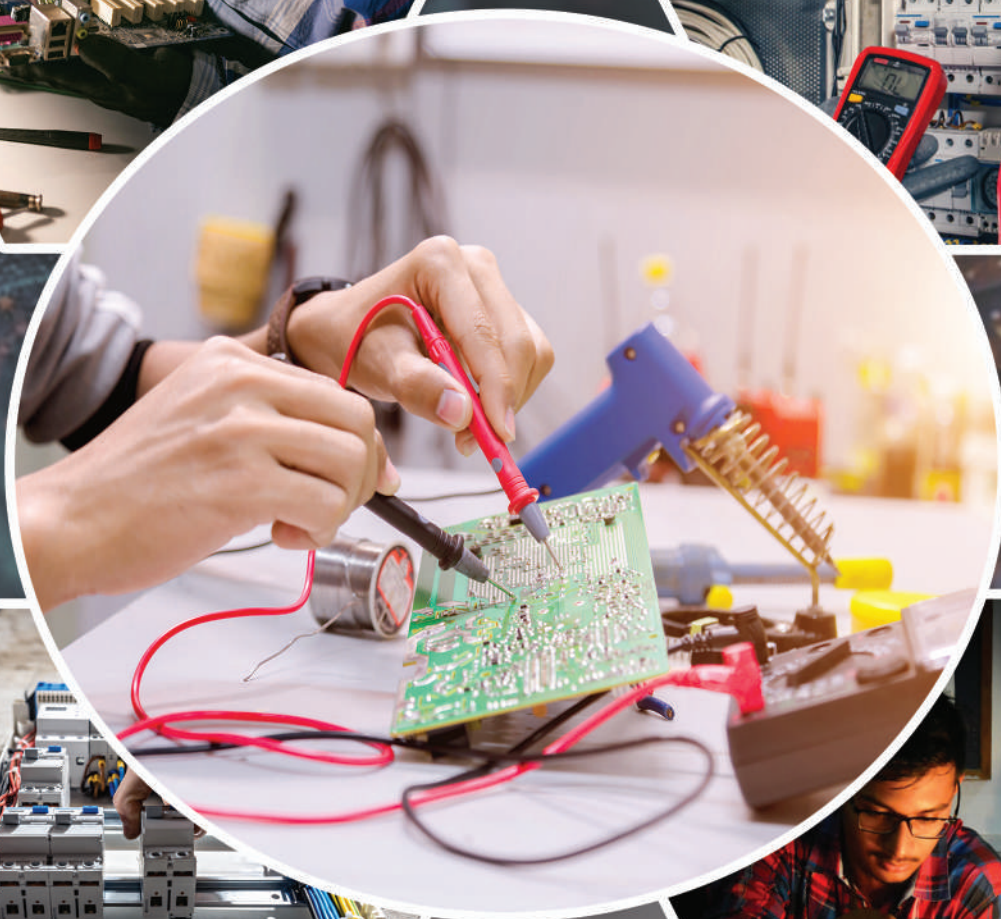
Execute 30+ industrial projects in Electric vehicles, Design, Manufacture Electric Vehicles

100% Placement Guaranteed (Unlimited Interviews)

THE FUTURE IS ELECTRIC - LEARN TO DRIVE IT WITH US

EV COURSES TO FAST-TRACK YOUR CAREER.

BECOME A FUTURE-READY EV PROFESSIONAL



**ELECTRIC VEHICLE
TRAINING COURSES**
TO ACCELERATE YOUR EV CAREER.



There is something in this tea -

It's heaven of tea


**FRANCHISE
OPPORTUNITY**
AVAILABLE NOW IN KERALA



Contact: +919606921223



History of Gilli Chai

Gilli Hospitality Pvt Limited was founded in **2019** with its head quarters in Nungambakkam, Chennai

"Gilli Chai" is its first venture with an aim to set up a network of Chai Outlets across Tamil Nadu followed by other states in India. It has plans to spread its wings in the Middle East and Far East Nations as well.

"Gilli Chai" intends to provide exclusive chai experience for people from every walk of life.





FOR FRANCHISE

Please Contact

+919606921223

**THANK
YOU**



www.mesma.co.in
info@mesma.co.in

109/7, 1 Floor, 20th Main Road 5th Block, West of chord Road, Rajaji Nagar ,
Bangaluru, Karnataka 560 010

Where There's

Tea

There's Hope

there is something in this tea -
it's heaven of tea



Good taste good mood

IN HANZ
DESIGNS

Mesma Solutions Pvt. Ltd

www.mesma.co.in

info@mesma.co.in

109/7, 1 Floor, 20th Main Road 5th Block, West of chord Road, Rajaji Nagar ,
Bangaluru, Karnataka 560 010